

EDUCATIONAL SEMINAR  
Occupational health & safety  
for foreign female workers

# Personal protective equipment



HRVATSKI ZAVOD  
ZA JAVNO ZDRAVSTVO

# PPE

equipment worn to minimize exposure to hazards that cause serious workplace injuries and illnesses

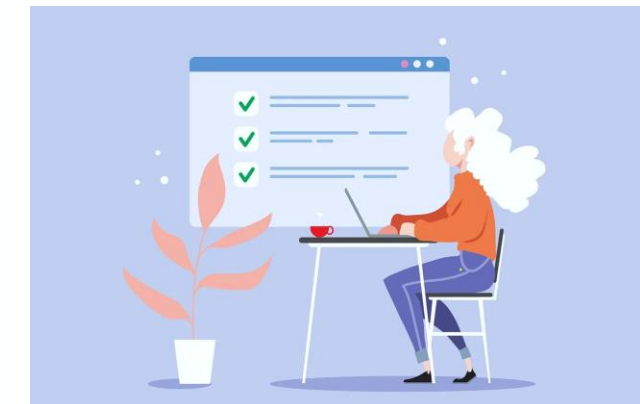


# Personal protective equipment

- depends on the potential risk of exposure to a hazard



## DIFFERENT JOBS AND POTENTIAL RISK





# Personal protective equipment

- employers are legally obligated to provide workers with appropriate and free personal protective equipment (PPE) when there is a risk to their health or safety that cannot be controlled by other means



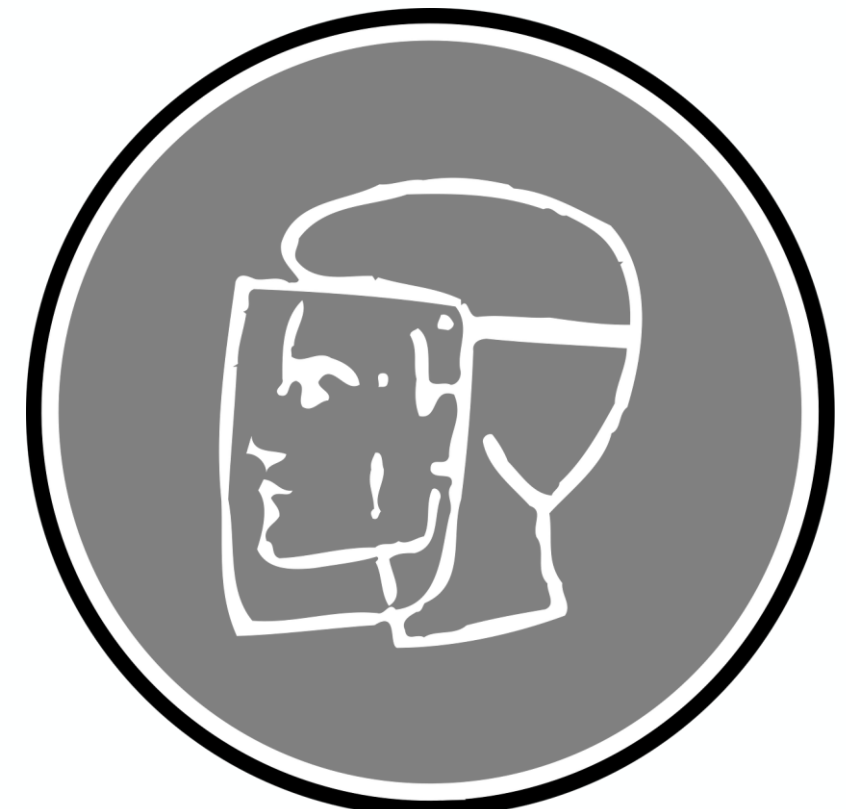
# PPE FOR HEAD PROTECTION

- **HARD HATS/PROTECTIVE HELMETS AND BUMP CAP**
- used in environments where there is a risk of being struck by falling objects, bumping your head against fixed objects, or contacting electrical hazards



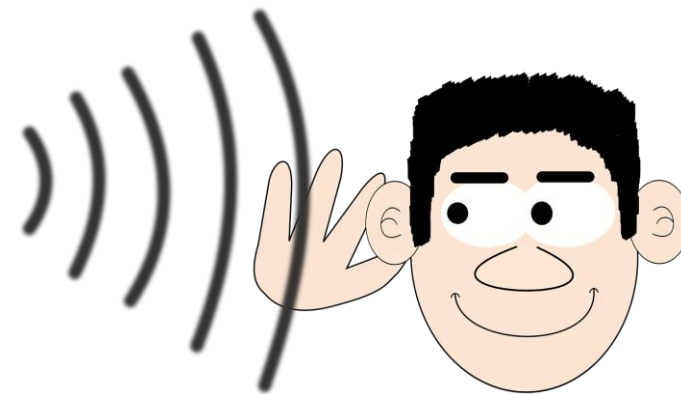
# PPE FOR EYES AND FACE PROTECTION

- **SAFETY GLASSES, GOGGLES AND FACE SHIELDS**
- shield workers from hazards like chemical splashes, flying debris, dust, radiation, and infectious agents



# PPE FOR HEARING PROTECTION

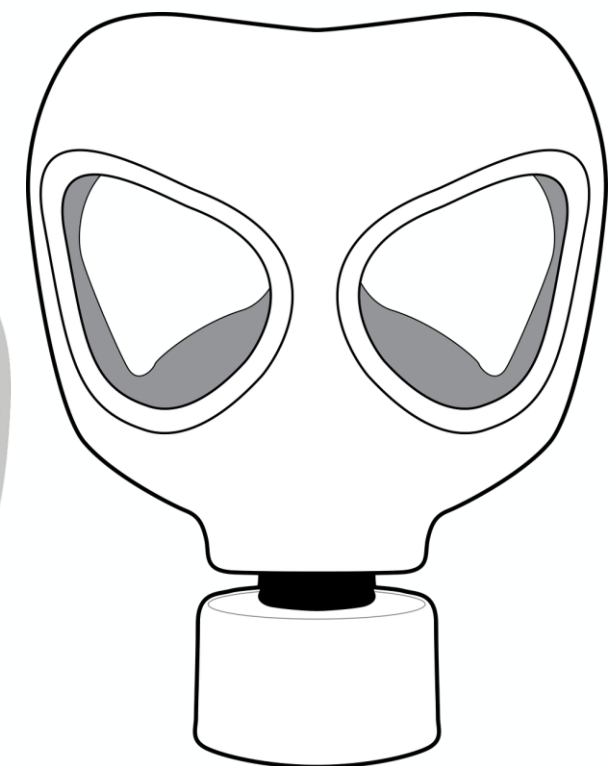
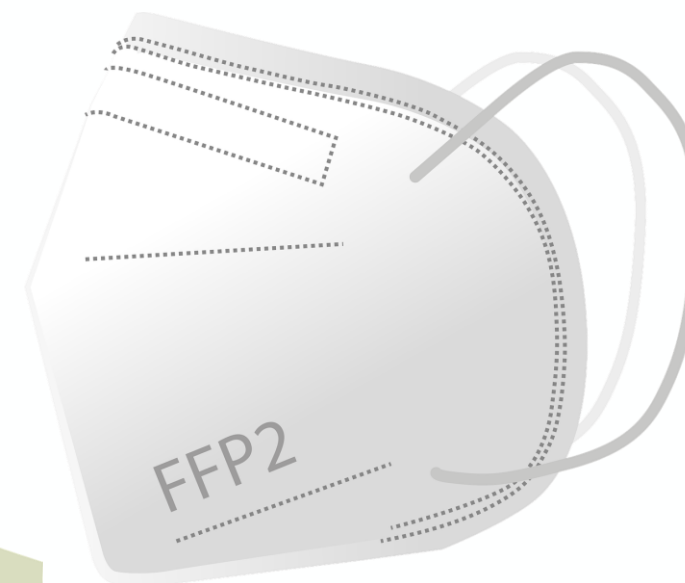
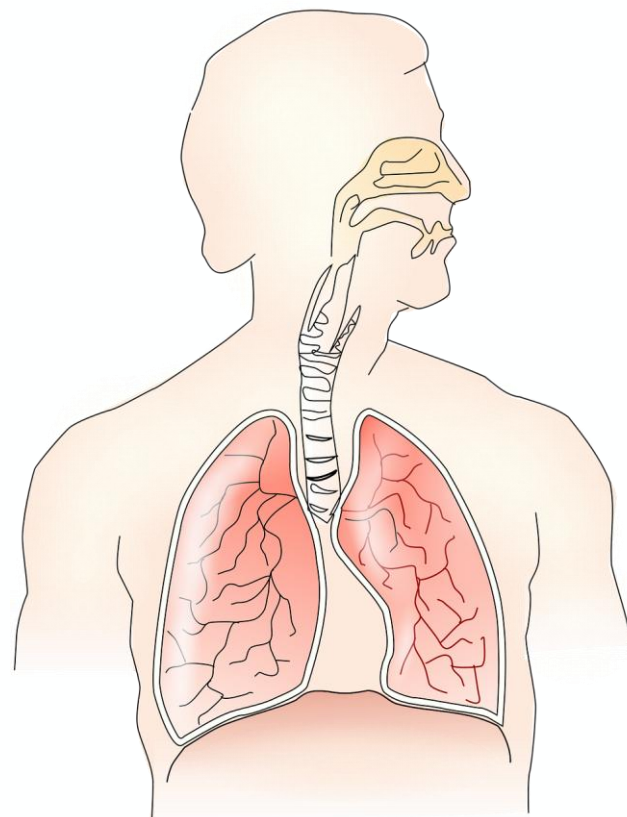
- **EARPLUGS AND MUFFS**
- block or reduce the level of harmful noise that enters the ear, thereby preventing noise-induced hearing loss





# PPE FOR RESPIRATORY PROTECTION

- **MASKS AND RESPIRATORS**
- to prevent the inhalation of hazardous substances like dust, mist, gas, and fumes





# PPE FOR HAND PROTECTION

- **GLOVES AND ARM COVERINGS**
- to shield hands and arms from hazards such as cuts, chemicals, burns, electrical shocks, and punctures



# PPE FOR LEG PROTECTION

- **SAFETY SHOES AND BOOTS**
- to guard legs and feet from hazards such as impact, compression, cuts, chemicals, heat, and punctures



# PPE FOR BODY PROTECTION

- **COVERALLS AND SUITS**
- to guard the body from a range of workplace hazards, such as chemicals, heat, electrical currents, biohazards, and physical impacts



# WORKER'S ROLE



- workers have a responsibility to use the PPE correctly and take reasonable care for their own safety





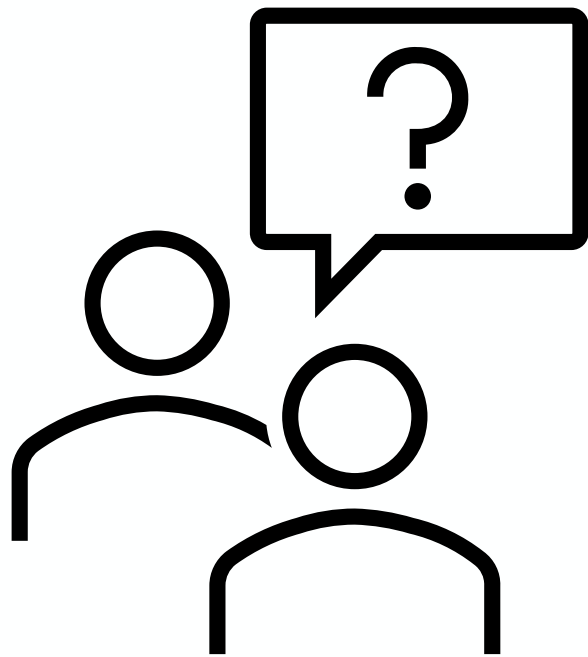
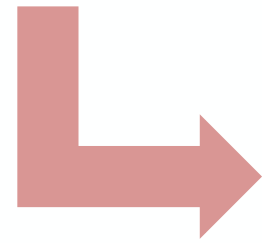
# WORKER'S ROLE



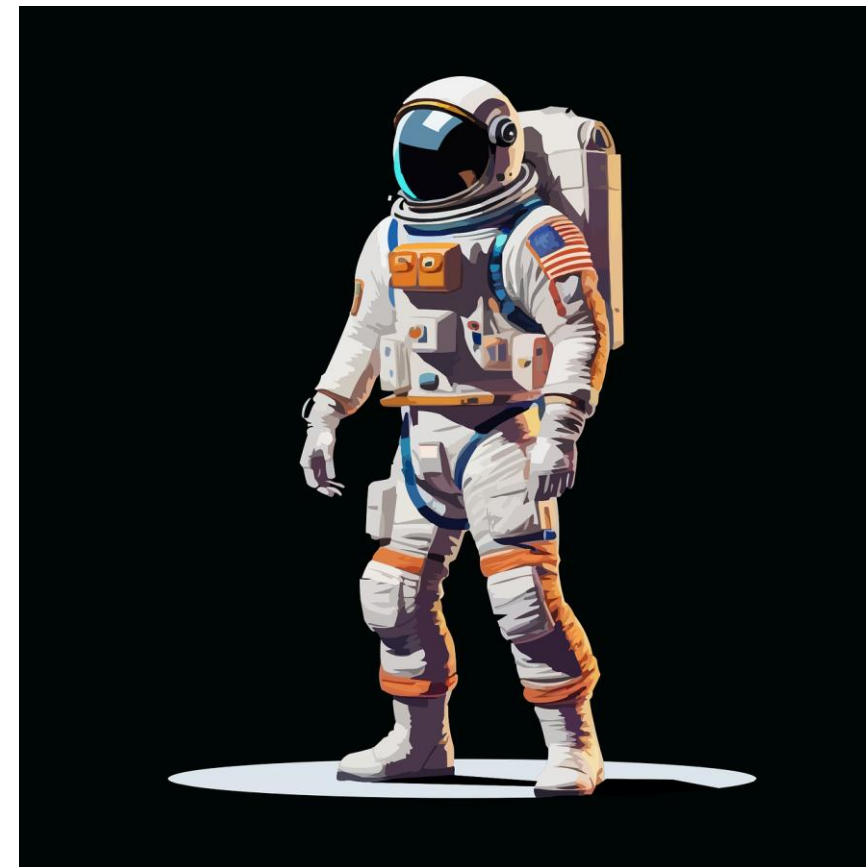
- workers should report any PPE that is lost or becomes defective to their employer



# Take home message



**...if you sometimes think it is hard to use personal protective equipment, imagine this...**





**Thank you!**

